



# 2021 DORP Report for The Academy for Urban Scholars

IRN: 012528  
School Type: High School

Address: 1808 E Broad St  
Columbus, OH 43203-2003

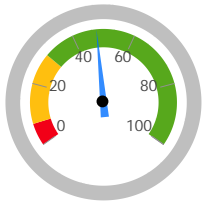
County: Franklin  
ITC: MVECA  
Sponsor: Buckeye Community Hope  
Foundation

## Graduation Rates

### 4-Year Graduation Rate

Applies to the Class of 2020, i.e. students who entered 9th grade in 2017 and graduated by 2020.

Class of 2020 Graduates:	Students Countable:	Graduation Rate:
43	90	47.8%



**RATING**

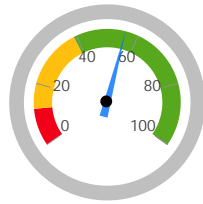
**Not Rated**

Exceeds	36.0-100.0%
Meets	8.0-35.9%
Does Not Meet	0.0-7.9%

### 5-Year Graduation Rate

Applies to the Class of 2019, i.e. students who entered 9th grade in 2016 and graduated by 2020.

Class of 2019 Graduates:	Students Countable:	Graduation Rate:
67	120	55.8%



**RATING**

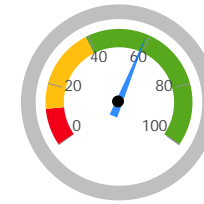
**Not Rated**

Exceeds	40.0-100.0%
Meets	12.0-39.9%
Does Not Meet	0.0-11.9%

### 6-Year Graduation Rate

Applies to the Class of 2018, i.e. students who entered 9th grade in 2015 and graduated by 2020.

Class of 2018 Graduates:	Students Countable:	Graduation Rate:
96	163	58.9%



**RATING**

**Not Rated**

Exceeds	40.0-100.0%
Meets	12.0-39.9%
Does Not Meet	0.0-11.9%

### 7-Year Graduation Rate

Applies to the Class of 2017, i.e. students who entered the 9th grade in 2014 and graduated by 2020.

Class of 2017 Graduates:	Students Countable:	Graduation Rate:
62	138	44.9%

### 8-Year Graduation Rate

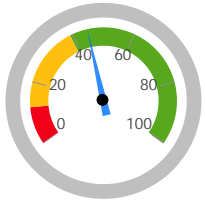
Applies to the Class of 2016, i.e. students who entered the 9th grade in 2013 and graduated by 2020.

Class of 2016 Graduates:	Students Countable:	Graduation Rate:
60	136	44.1%

### Combined Graduation Rate

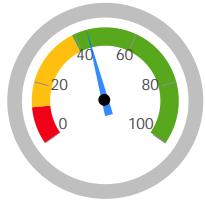
The weighted average of the five individual graduation rates.

Combined Graduates:	Combined Students:	Graduation Rate:
328	647	50.7%



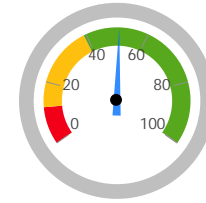
**RATING**  
Not Rated

Exceeds 40.0-100.0%  
Meets 12.0-39.9%  
Does Not Meet 0.0-11.9%



**RATING**  
Not Rated

Exceeds 40.0-100.0%  
Meets 12.0-39.9%  
Does Not Meet 0.0-11.9%



**RATING**  
Not Rated

Exceeds 40.0-100.0%  
Meets 12.0-39.9%  
Does Not Meet 0.0-11.9%

### High School Assessment Test Passage Rate

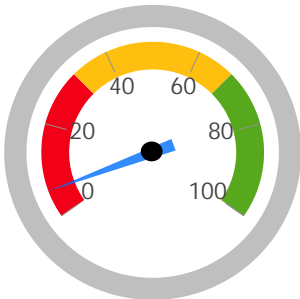
The test passage rate is the percent of students in 12th grade or nearing 22 years old who have passed all required high school assessments.

Students in the School for a Full Academic Year:  
139

Students Who Passed All Required Tests:  
8

Students who Passed All Required Tests:  
5.8%

Exceeds 68.0-100.0%  
Meets 32.0-67.9%  
Does Not Meet 0.0-31.9%



**RATING**  
Not Rated

### Progress

This measures the progress for all students in math and reading.

Progress Score		
Reading	Mathematics	Overall
Does Not Meet Standards	Does Not Meet Standards	Not Rated
	Exceeds 2.00 and up	
	Meets -2.00 to 1.99	
	Does Not Meet below -2.00	

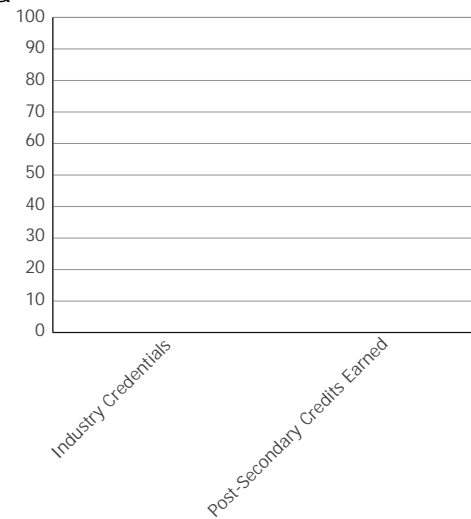
**RATING**  
Not Rated



### Other Student Outcome Data

Denominator (Graduation Cohort for 2016 - 2020): 210

	Student #	Pct
Industry Credentials	0	0.0
Post-Secondary Credits Earned	0	0.0



### Annual Measurable Objectives

The Annual Measurable Objectives score is determined using multiple data points. For each student subgroup, the school's results are compared to the statewide Annual Measurable Objectives (AMOs). "Points" are earned based on how the school compared to the AMO, to their results last year (improvement), and to how far they were from meeting the AMO (the "gap"). These points are averaged to determine a preliminary score and rating, which may be demoted if certain minimum performance requirements are not met.

### AMO - English Language Arts Proficiency

Subgroup	Metrics	Took Test #	Perf Index	Goal	LT Goal	LT Gap	Took Test LY #	Perf Index LY	Improve	LT Gap Close %	VA Gain Index	Points
All Students		90	32.963	89.9	100.0	67.0	76	38.681	(5.7)	-8.5%	0	0.0
Am. Indian or Alaskan Native		0	NC	82.2	88.1	NC	0	NC	NC	NC	NC	NR
Asian or Pacific Islander		0	NC	93.6	95.8	NC	0	NC	NC	NC	NC	NR
Black, Non-Hispanic		88	32.736	69.5	79.7	47.0	75	38.778	(6.0)	-12.9%	0	0.0
Hispanic		0	NC	76.5	84.4	NC	0	NC	NC	NC	NC	NR
Multiracial		2	NC	81.9	88.0	NC	1	NC	NC	NC	NC	NR
White, Non-Hispanic		0	NC	88.6	92.4	NC	0	NC	NC	NC	NC	NR
Economic Disadvantage		90	32.963	75.6	83.8	50.8	74	38.876	(5.9)	-11.6%	0	0.0
English Learner		0	NC	71.4	80.9	NC	0	NC	NC	NC	NC	NR
Students with Disabilities		20	27.500	64.4	76.3	48.8	17	31.579	0.0	0.0%	0	0.0



Total of Subgroup Points: 0.0  
 Possible Subgroup Points: 400.0

English Language Arts Points Earned (Total / Possible): 0.0

1. If Perf Index is greater than the (Short Term) Goal, then 100.0 points are earned and the Long Term Gap is N/A. If not, the LT Gap is the difference between Perf Index and the Long Term Goal. Subgroups of less than 15 students are Not Rated (NR).
2. A full 100.0 points are also awarded if the single year Value Added Gain Index for the subgroup is at least 1.0.
3. Otherwise, LT Gap Close % = (Improv / LT Gap) \* 100., and the points awarded are LT Gap Close % \* 10. It is impossible to earn more than 100 or less than zero points.
4. After all subgroup points have been calculated, they are added together. The total is divided by the maximum points possible (100 x number of subgroups that were not NR) to determine the final points for Reading.

### AMO - Math Proficiency

Subgroup	Metrics	Took Test #	Perf Index	Goal	LT Goal	LT Gap	Took Test LY #	Perf Index LY	Improve	LT Gap Close %	VA Gain Index	Points
All Students		112	24.833	90.2	100.0	75.2	128	32.787	(8.0)	-10.6%	0	0.0
Am. Indian or Alaskan Native		0	NC	80.7	87.1	NC	0	NC	NC	NC	NC	NR
Asian or Pacific Islander		0	NC	98.1	98.8	NC	0	NC	NC	NC	NC	NR
Black, Non-Hispanic		109	24.957	67.8	78.5	53.5	124	32.727	(7.8)	-14.5%	0	0.0
Hispanic		0	NC	76.9	84.6	NC	1	NC	NC	NC	NC	NR
Multiracial		3	NC	81.4	87.6	NC	2	NC	NC	NC	NC	NR
White, Non-Hispanic		0	NC	89.7	93.1	NC	1	NC	NC	NC	NC	NR
Economic Disadvantage		112	24.833	75.9	84.0	59.2	124	32.849	(8.0)	-13.5%	0	0.0
English Learner		0	NC	75.1	83.4	NC	0	NC	NC	NC	NC	NR
Students with Disabilities		23	22.800	65.1	76.8	54.0	31	29.333	(6.5)	-12.1%	0	0.0

Total of Subgroup Points: 0.0  
 Possible Subgroup Points: 400.0

Math Points Earned (Total / Possible): 0.0



1. If Perf Index is greater than the (Short Term) Goal, then 100.0 points are earned and the Long Term Gap is N/A. If not, the LT Gap is the difference between Perf Index and the Long Term Goal. Subgroups of less than 15 students are Not Rated (NR).
2. A full 100.0 points are also awarded if the single year Value Added Gain Index for the subgroup is at least 1.0.
3. Otherwise, LT Gap Close % = (Improv / LT Gap) \* 100., and the points awarded are LT Gap Close % \* 10. It is impossible to earn more than 100 or less than zero points.
4. After all subgroup points have been calculated, they are added together. The total is divided by the maximum points possible (100 x number of subgroups that were not NR) to determine the final points for Math.

### AMO - Graduation Rate

Subgroup	Metrics	Grads #	Non-Grads #	Cohort Students #	Grad Rate %	Goal	Gap	Grads LY #	Non-Grads LY #	Cohort Students # LY	Grad Rate LY %	Improve	Points
All Students		43	47	90	47.8	88.0	45.2	40	64	104	38.5	9.3	100.0
Am. Indian or Alaskan Native		0	0	0	NC	82.3	NC	0	0	0	NC	NC	NR
Asian or Pacific Islander		0	0	0	NC	90.4	NC	0	0	0	NC	NC	NR
Black, Non-Hispanic		39	45	84	46.4	73.8	36.1	37	61	98	37.8	8.6	100.0
Hispanic		0	0	0	NC	79.0	NC	0	0	0	NC	NC	NR
Multiracial		4	1	5	NC	83.3	NC	1	2	3	NC	NC	NR
White, Non-Hispanic		0	1	1	NC	90.2	NC	2	1	3	NC	NC	NR
Economic Disadvantage		42	47	89	47.2	78.6	38.5	40	57	97	41.2	6.0	100.0
English Learner		0	0	0	NC	65.8	NC	0	2	2	NC	NC	NR
Students with Disabilities		17	10	27	63.0	76.9	21.6	14	15	29	48.3	14.7	100.0

Total of Subgroup Points: 400.0

Possible Subgroup Points: 400.0

Graduation Rate Points Earned (Total / Possible): 100.0

1. If [Grad Rate %] is greater than the Goal, then 100.0 points are earned and the Gap is not applicable (N/A). If not, the Gap is the difference between [Grad Rate %] and the Goal. Subgroups of less than 15 students are Not Rated (NR).
2. Improvement from last year's result is [Grad Rate %] minus [Grad Rate LY %]. If Improvement is greater than the Gap, then 100.0 points are earned.
3. Otherwise, partial points are awarded using the formula (Improvement / Gap) \* 100. It is impossible to earn more than 100 or less than zero points.
4. After all subgroup points have been calculated, they are added together. The total is divided by the maximum points possible (100 x number of subgroups that were not NR) to determine the final points for Graduation Rate.

### AMO - English Learners



	This Year	Last Year	Change
EL Students #	0	0	
Proficient #	0	0	
Not Proficient, Met Growth Target #	0	0	
Met %	0.000	0.000	0.000
Interim Goal %	60.0		
Interim Goal Met?	*		
Long Term Goal %	75.0	75.0	
Long Term Goal Gap	0.000	75.000	-75.000

$$\begin{array}{r}
 \text{Met \%} \\
 \text{Improvement} \\
 \\
 0.000
 \end{array}
 \bigg/
 \begin{array}{r}
 \text{Current} \\
 \text{Year Gap} \\
 \\
 0.000
 \end{array}
 = 0.000\% = 0.000 \text{ Points}$$

- 1) Please note that intermediate calculations are not rounded. Although three decimal places are displayed in this table, \*all\* decimal places are used internally until the final calculation, where the final points earned are rounded to one decimal place.
- 2) If the gap improvement is more than 10%, so the maximum 100 points have been earned.

### AMO - Preliminary Score

The preliminary score is the average of the English Language Arts, Math, and Graduation Rate from the preceding pages. The result is applied to the rating scale to determine a preliminary rating.

English Language Arts Points:	0.0	Rating Scale:	Preliminary Rating:
Math Points:	0.0	Exceeds Standards 36.0 - 100.0%	<b>Not Rated</b>
Graduation Rate Points:	100.0	Meets Standards 1.0 - 35.9%	
English Learner Points:	0.0	Does Not Meet Standards 0.0 - 0.9%	
<b>Preliminary Score:</b>	<b>33.3</b>		

### AMO - Rating Demotions



### Participation Rates

The minimum Participation Rate is 95.0%. If any subgroup does not meet this requirement in either English Language Arts or Math, a rating demotion occurs. Participation Rate is not calculated if a subgroup does not have at least 40 students required to take the test.

#### English Language Arts

Subgroup	Metrics	Required to Participate #	Participated #	Participation Rate %
All Students		144	128	88.9
Am. Indian or Alaskan Native		0	0	NC
Asian or Pacific Islander		0	0	NC
Black, Non-Hispanic		137	122	89.1
Hispanic		0	0	NC
Multiracial		4	4	NC
White, Non-Hispanic		3	2	NC
Economic Disadvantage		144	128	88.9
English Learner		0	0	NC
Students with Disabilities		31	26	NC

#### Math

Subgroup	Metrics	Required to Participate #	Participated #	Participation Rate %
All Students		162	126	77.8
Am. Indian or Alaskan Native		0	0	NC
Asian or Pacific Islander		0	0	NC
Black, Non-Hispanic		155	120	77.4
Hispanic		0	0	NC
Multiracial		5	4	NC
White, Non-Hispanic		2	2	NC
Economic Disadvantage		162	126	77.8
English Learner		0	0	NC
Students with Disabilities		32	23	NC

### AMO - Final Score and Rating

If a rating demotion is required, then the preliminary score is reduced by 5.0 points to determine the final score. The final score is applied to the rating scale to determine the final rating.

Preliminary Rating: **Not Rated**

Demotion Required? **Yes**

Final Score: **28.3**

Rating Scale:

- Exceeds Standards 36.0 - 100.0%
- Meets Standards 1.0 - 35.9%
- Does Not Meet 0.0 - 0.9% Standards

RATING
<b>Not Rated</b>

### Overall Rating for the Dropout Recovery School



	Exceeds	Meets	Does Not Meet
Combined Graduation Rate:	30	20	0
High School Assessment Test Passage:	20	10	0
Progress:	30	20	0
Annual Measurable Objectives:	20	10	0

points earned out of a possible = 50.0%

A school that improves its High School Assessment Test Passage Rate and the 4-year, 5-year, 6-year, 7-year, and 8-year Graduation Rates by 10% or more in both the current and prior two year comparison periods can be rated no lower than Meets Expectations.

Because the school earned enough points for a higher rating than Does Not Meet Standards, this calculation does not apply.

Rating Scale:

Exceeds Standards	80.0 - 100.0%
Meets Standards	40.0 - 79.9%
Does Not Meet Standards	0.0 - 39.9%

50

RATING

Not Rated

[Click here](#) to see the Secure Data Center - Status of Reports report