



# 2021 DORP Report for Academy for Urban Scholars Youngstown

IRN: 013249  
School Type: High School

Address: 3405 Market St  
Youngstown, OH 44507-1765

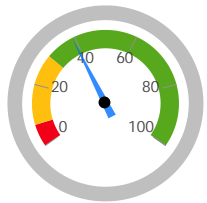
County: Mahoning  
ITC: MVECA  
Sponsor: Buckeye Community Hope  
Foundation

## Graduation Rates

### 4-Year Graduation Rate

Applies to the Class of 2020, i.e. students who entered 9th grade in 2017 and graduated by 2020.

| Class of 2020 Graduates: | Students Countable: | Graduation Rate: |
|--------------------------|---------------------|------------------|
| 29                       | 74                  | 39.2%            |



**RATING**

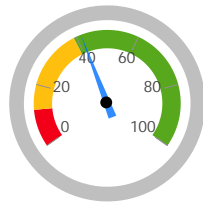
**Not Rated**

|               |             |
|---------------|-------------|
| Exceeds       | 36.0-100.0% |
| Meets         | 8.0-35.9%   |
| Does Not Meet | 0.0-7.9%    |

### 5-Year Graduation Rate

Applies to the Class of 2019, i.e. students who entered 9th grade in 2016 and graduated by 2020.

| Class of 2019 Graduates: | Students Countable: | Graduation Rate: |
|--------------------------|---------------------|------------------|
| 32                       | 77                  | 41.6%            |



**RATING**

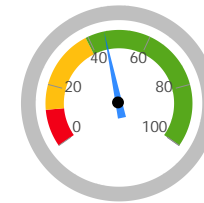
**Not Rated**

|               |             |
|---------------|-------------|
| Exceeds       | 40.0-100.0% |
| Meets         | 12.0-39.9%  |
| Does Not Meet | 0.0-11.9%   |

### 6-Year Graduation Rate

Applies to the Class of 2018, i.e. students who entered 9th grade in 2015 and graduated by 2020.

| Class of 2018 Graduates: | Students Countable: | Graduation Rate: |
|--------------------------|---------------------|------------------|
| 29                       | 64                  | 45.3%            |



**RATING**

**Not Rated**

|               |             |
|---------------|-------------|
| Exceeds       | 40.0-100.0% |
| Meets         | 12.0-39.9%  |
| Does Not Meet | 0.0-11.9%   |

### 7-Year Graduation Rate

Applies to the Class of 2017, i.e. students who entered the 9th grade in 2014 and graduated by 2020.

| Class of 2017 Graduates: | Students Countable: | Graduation Rate: |
|--------------------------|---------------------|------------------|
| 43                       | 86                  | 50.0%            |

### 8-Year Graduation Rate

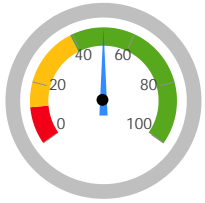
Applies to the Class of 2016, i.e. students who entered the 9th grade in 2013 and graduated by 2020.

| Class of 2016 Graduates: | Students Countable: | Graduation Rate: |
|--------------------------|---------------------|------------------|
| 33                       | 59                  | 55.9%            |

### Combined Graduation Rate

The weighted average of the five individual graduation rates.

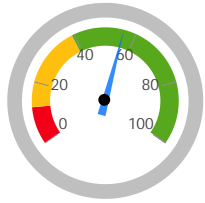
| Combined Graduates: | Combined Students: | Graduation Rate: |
|---------------------|--------------------|------------------|
| 166                 | 360                | 46.1%            |



**RATING**

**Not Rated**

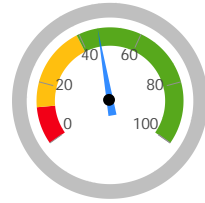
Exceeds 40.0-100.0%  
 Meets 12.0-39.9%  
 Does Not Meet 0.0-11.9%



**RATING**

**Not Rated**

Exceeds 40.0-100.0%  
 Meets 12.0-39.9%  
 Does Not Meet 0.0-11.9%



**RATING**

**Not Rated**

Exceeds 40.0-100.0%  
 Meets 12.0-39.9%  
 Does Not Meet 0.0-11.9%

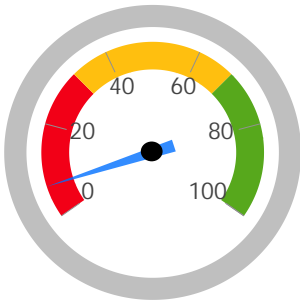
### High School Assessment Test Passage Rate

The test passage rate is the percent of students in 12th grade or nearing 22 years old who have passed all required high school assessments.

Students in the School for a Full Academic Year:  
44

Students Who Passed All Required Tests:  
3

Students who Passed All Required Tests:  
6.8%



Exceeds 68.0-100.0%  
 Meets 32.0-67.9%  
 Does Not Meet 0.0-31.9%

**RATING**

**Not Rated**

### Progress

This measures the progress for all students in math and reading.

| Progress Score  |                           |           |
|-----------------|---------------------------|-----------|
| Reading         | Mathematics               | Overall   |
| Meets Standards | Meets Standards           | Not Rated |
|                 | Exceeds 2.00 and up       |           |
|                 | Meets -2.00 to 1.99       |           |
|                 | Does Not Meet below -2.00 |           |

**RATING**

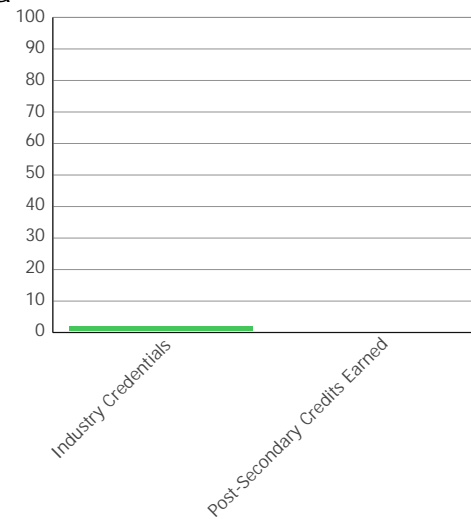
**Not Rated**



### Other Student Outcome Data

Denominator (Graduation Cohort for 2016 - 2020): 151

|                               | Student # | Pct |
|-------------------------------|-----------|-----|
| Industry Credentials          | 7         | 2.1 |
| Post-Secondary Credits Earned | 0         | 0.0 |



### Annual Measurable Objectives

The Annual Measurable Objectives score is determined using multiple data points. For each student subgroup, the school's results are compared to the statewide Annual Measurable Objectives (AMOs). "Points" are earned based on how the school compared to the AMO, to their results last year (improvement), and to how far they were from meeting the AMO (the "gap"). These points are averaged to determine a preliminary score and rating, which may be demoted if certain minimum performance requirements are not met.

### AMO - English Language Arts Proficiency

| Subgroup                     | Metrics | Took Test # | Perf Index | Goal | LT Goal | LT Gap | Took Test LY # | Perf Index LY | Improve | LT Gap Close % | VA Gain Index | Points |
|------------------------------|---------|-------------|------------|------|---------|--------|----------------|---------------|---------|----------------|---------------|--------|
| All Students                 |         | 51          | 25.781     | 89.9 | 100.0   | 74.2   | 43             | 44.681        | (18.9)  | -25.5%         | 0             | 0.0    |
| Am. Indian or Alaskan Native |         | 0           | NC         | 82.2 | 88.1    | NC     | 0              | NC            | NC      | NC             | NC            | NR     |
| Asian or Pacific Islander    |         | 0           | NC         | 93.6 | 95.8    | NC     | 0              | NC            | NC      | NC             | NC            | NR     |
| Black, Non-Hispanic          |         | 37          | 27.917     | 69.5 | 79.7    | 51.8   | 31             | 40.909        | (13.0)  | -25.1%         | 0             | 0.0    |
| Hispanic                     |         | 6           | NC         | 76.5 | 84.4    | NC     | 5              | NC            | NC      | NC             | NC            | NR     |
| Multiracial                  |         | 5           | NC         | 81.9 | 88.0    | NC     | 4              | NC            | NC      | NC             | NC            | NR     |
| White, Non-Hispanic          |         | 3           | NC         | 88.6 | 92.4    | NC     | 3              | NC            | NC      | NC             | NC            | NR     |
| Economic Disadvantage        |         | 51          | 25.781     | 75.6 | 83.8    | 58.0   | 43             | 44.681        | (18.9)  | -32.6%         | 0             | 0.0    |
| English Learner              |         | 0           | NC         | 71.4 | 80.9    | NC     | 0              | NC            | NC      | NC             | NC            | NR     |
| Students with Disabilities   |         | 10          | NC         | 64.4 | 76.3    | NC     | 7              | NC            | NC      | NC             | NC            | NR     |



Total of Subgroup Points: 0.0  
 Possible Subgroup Points: 300.0

English Language Arts Points Earned (Total / Possible): 0.0

1. If Perf Index is greater than the (Short Term) Goal, then 100.0 points are earned and the Long Term Gap is N/A. If not, the LT Gap is the difference between Perf Index and the Long Term Goal. Subgroups of less than 15 students are Not Rated (NR).
2. A full 100.0 points are also awarded if the single year Value Added Gain Index for the subgroup is at least 1.0.
3. Otherwise, LT Gap Close % = (Improv / LT Gap) \* 100., and the points awarded are LT Gap Close % \* 10. It is impossible to earn more than 100 or less than zero points.
4. After all subgroup points have been calculated, they are added together. The total is divided by the maximum points possible (100 x number of subgroups that were not NR) to determine the final points for Reading.

### AMO - Math Proficiency

| Subgroup                     | Metrics | Took Test # | Perf Index | Goal | LT Goal | LT Gap | Took Test LY # | Perf Index LY | Improve | LT Gap Close % | VA Gain Index | Points |
|------------------------------|---------|-------------|------------|------|---------|--------|----------------|---------------|---------|----------------|---------------|--------|
| All Students                 |         | 70          | 21.125     | 90.2 | 100.0   | 78.9   | 51             | 29.844        | (8.7)   | -11.1%         | 0             | 0.0    |
| Am. Indian or Alaskan Native |         | 0           | NC         | 80.7 | 87.1    | NC     | 0              | NC            | NC      | NC             | NC            | NR     |
| Asian or Pacific Islander    |         | 0           | NC         | 98.1 | 98.8    | NC     | 0              | NC            | NC      | NC             | NC            | NR     |
| Black, Non-Hispanic          |         | 53          | 22.903     | 67.8 | 78.5    | 55.6   | 36             | 28.667        | (5.8)   | -10.4%         | 0             | 0.0    |
| Hispanic                     |         | 7           | NC         | 76.9 | 84.6    | NC     | 7              | NC            | NC      | NC             | NC            | NR     |
| Multiracial                  |         | 7           | NC         | 81.4 | 87.6    | NC     | 6              | NC            | NC      | NC             | NC            | NR     |
| White, Non-Hispanic          |         | 3           | NC         | 89.7 | 93.1    | NC     | 2              | NC            | NC      | NC             | NC            | NR     |
| Economic Disadvantage        |         | 70          | 21.125     | 75.9 | 84.0    | 62.9   | 51             | 29.844        | (8.7)   | -13.9%         | 0             | 0.0    |
| English Learner              |         | 0           | NC         | 75.1 | 83.4    | NC     | 0              | NC            | NC      | NC             | NC            | NR     |
| Students with Disabilities   |         | 18          | 23.182     | 65.1 | 76.8    | 53.6   | 8              | NC            | 0.0     | 0.0%           | 0             | 0.0    |

Total of Subgroup Points: 0.0  
 Possible Subgroup Points: 400.0

Math Points Earned (Total / Possible): 0.0



1. If Perf Index is greater than the (Short Term) Goal, then 100.0 points are earned and the Long Term Gap is N/A. If not, the LT Gap is the difference between Perf Index and the Long Term Goal. Subgroups of less than 15 students are Not Rated (NR).
2. A full 100.0 points are also awarded if the single year Value Added Gain Index for the subgroup is at least 1.0.
3. Otherwise, LT Gap Close % = (Improv / LT Gap) \* 100., and the points awarded are LT Gap Close % \* 10. It is impossible to earn more than 100 or less than zero points.
4. After all subgroup points have been calculated, they are added together. The total is divided by the maximum points possible (100 x number of subgroups that were not NR) to determine the final points for Math.

### AMO - Graduation Rate

| Subgroup                     | Metrics | Grads # | Non-Grads # | Cohort Students # | Grad Rate % | Goal | Gap  | Grads LY # | Non-Grads LY # | Cohort Students # LY | Grad Rate LY % | Improve | Points |
|------------------------------|---------|---------|-------------|-------------------|-------------|------|------|------------|----------------|----------------------|----------------|---------|--------|
| All Students                 |         | 29      | 45          | 74                | 39.2        | 88.0 | 53.8 | 21         | 39             | 60                   | 35.0           | 4.2     | 78.1   |
| Am. Indian or Alaskan Native |         | 0       | 0           | 0                 | NC          | 82.3 | NC   | 0          | 0              | 0                    | NC             | NC      | NR     |
| Asian or Pacific Islander    |         | 0       | 1           | 1                 | NC          | 90.4 | NC   | 0          | 0              | 0                    | NC             | NC      | NR     |
| Black, Non-Hispanic          |         | 26      | 36          | 62                | 41.9        | 73.8 | 40.6 | 17         | 27             | 44                   | 38.6           | 3.3     | 81.3   |
| Hispanic                     |         | 0       | 4           | 4                 | NC          | 79.0 | NC   | 1          | 7              | 8                    | NC             | NC      | NR     |
| Multiracial                  |         | 1       | 0           | 1                 | NC          | 83.3 | NC   | 1          | 2              | 3                    | NC             | NC      | NR     |
| White, Non-Hispanic          |         | 2       | 4           | 6                 | NC          | 90.2 | NC   | 2          | 3              | 5                    | NC             | NC      | NR     |
| Economic Disadvantage        |         | 29      | 45          | 74                | 39.2        | 78.6 | 46.5 | 21         | 39             | 60                   | 35.0           | 4.2     | 90.3   |
| English Learner              |         | 0       | 2           | 2                 | NC          | 65.8 | NC   | 0          | 2              | 2                    | NC             | NC      | NR     |
| Students with Disabilities   |         | 6       | 15          | 21                | 28.6        | 76.9 | 56.0 | 6          | 10             | 16                   | 37.5           | (8.9)   | 0.0    |

Total of Subgroup Points: 249.7  
 Possible Subgroup Points: 400.0  
 Graduation Rate Points Earned (Total / Possible): 62.4

1. If [Grad Rate %] is greater than the Goal, then 100.0 points are earned and the Gap is not applicable (N/A). If not, the Gap is the difference between [Grad Rate %] and the Goal. Subgroups of less than 15 students are Not Rated (NR).
2. Improvement from last year's result is [Grad Rate %] minus [Grad Rate LY %]. If Improvement is greater than the Gap, then 100.0 points are earned.
3. Otherwise, partial points are awarded using the formula (Improvement / Gap) \* 100. It is impossible to earn more than 100 or less than zero points.
4. After all subgroup points have been calculated, they are added together. The total is divided by the maximum points possible (100 x number of subgroups that were not NR) to determine the final points for Graduation Rate.

### AMO - English Learners



|                                     | This Year | Last Year | Change  |
|-------------------------------------|-----------|-----------|---------|
| EL Students #                       | 0         | 0         |         |
| Proficient #                        | 0         | 0         |         |
| Not Proficient, Met Growth Target # | 0         | 0         |         |
| Met %                               | 0.000     | 0.000     | 0.000   |
| Interim Goal %                      | 60.0      |           |         |
| Interim Goal Met?                   | *         |           |         |
| Long Term Goal %                    | 75.0      | 75.0      |         |
| Long Term Goal Gap                  | 0.000     | 75.000    | -75.000 |

$$\begin{array}{r}
 \text{Met \%} \\
 \text{Improvement} \\
 \\
 0.000
 \end{array}
 \bigg/
 \begin{array}{r}
 \text{Current} \\
 \text{Year Gap} \\
 \\
 0.000
 \end{array}
 = 0.000\% = 0.000 \text{ Points}$$

- 1) Please note that intermediate calculations are not rounded. Although three decimal places are displayed in this table, \*all\* decimal places are used internally until the final calculation, where the final points earned are rounded to one decimal place.
- 2) If the gap improvement is more than 10%, so the maximum 100 points have been earned.

### AMO - Preliminary Score

The preliminary score is the average of the English Language Arts, Math, and Graduation Rate from the preceding pages. The result is applied to the rating scale to determine a preliminary rating.

|                               |             |                                    |                     |
|-------------------------------|-------------|------------------------------------|---------------------|
| English Language Arts Points: | 0.0         | Rating Scale:                      | Preliminary Rating: |
| Math Points:                  | 0.0         | Exceeds Standards 36.0 - 100.0%    | <b>Not Rated</b>    |
| Graduation Rate Points:       | 62.4        | Meets Standards 1.0 - 35.9%        |                     |
| English Learner Points:       | 0.0         | Does Not Meet Standards 0.0 - 0.9% |                     |
| <b>Preliminary Score:</b>     | <b>20.8</b> |                                    |                     |

### AMO - Rating Demotions



## Participation Rates

The minimum Participation Rate is 95.0%. If any subgroup does not meet this requirement in either English Language Arts or Math, a rating demotion occurs. Participation Rate is not calculated if a subgroup does not have at least 40 students required to take the test.

### English Language Arts

| Subgroup                     | Metrics | Required to Participate # | Participated # | Participation Rate % |
|------------------------------|---------|---------------------------|----------------|----------------------|
| All Students                 |         | 83                        | 56             | 67.5                 |
| Am. Indian or Alaskan Native |         | 0                         | 0              | NC                   |
| Asian or Pacific Islander    |         | 0                         | 0              | NC                   |
| Black, Non-Hispanic          |         | 58                        | 43             | 74.1                 |
| Hispanic                     |         | 12                        | 3              | NC                   |
| Multiracial                  |         | 6                         | 4              | NC                   |
| White, Non-Hispanic          |         | 7                         | 6              | NC                   |
| Economic Disadvantage        |         | 83                        | 56             | 67.5                 |
| English Learner              |         | 0                         | 0              | NC                   |
| Students with Disabilities   |         | 20                        | 18             | NC                   |

### Math

| Subgroup                     | Metrics | Required to Participate # | Participated # | Participation Rate % |
|------------------------------|---------|---------------------------|----------------|----------------------|
| All Students                 |         | 109                       | 70             | 64.2                 |
| Am. Indian or Alaskan Native |         | 0                         | 0              | NC                   |
| Asian or Pacific Islander    |         | 0                         | 0              | NC                   |
| Black, Non-Hispanic          |         | 80                        | 57             | 71.3                 |
| Hispanic                     |         | 15                        | 4              | NC                   |
| Multiracial                  |         | 8                         | 5              | NC                   |
| White, Non-Hispanic          |         | 6                         | 4              | NC                   |
| Economic Disadvantage        |         | 109                       | 70             | 64.2                 |
| English Learner              |         | 0                         | 0              | NC                   |
| Students with Disabilities   |         | 30                        | 25             | NC                   |

## AMO - Final Score and Rating

If a rating demotion is required, then the preliminary score is reduced by 5.0 points to determine the final score. The final score is applied to the rating scale to determine the final rating.

|                     |                    |              |  |
|---------------------|--------------------|--------------|--|
| Preliminary Rating: | Demotion Required? | Final Score: | Rating Scale:  |
| Not Rated           | Yes                | 15.8         | Exceeds Standards 36.0 - 100.0%<br>Meets Standards 1.0 - 35.9%<br>Does Not Meet 0.0 - 0.9% Standards |

| RATING    |
|-----------|
| Not Rated |

## Overall Rating for the Dropout Recovery School



|                                      | Exceeds | Meets | Does Not Meet |
|--------------------------------------|---------|-------|---------------|
| Combined Graduation Rate:            | 30      | 20    | 0             |
| High School Assessment Test Passage: | 20      | 10    | 0             |
| Progress:                            | 30      | 20    | 0             |
| Annual Measurable Objectives:        | 20      | 10    | 0             |

points earned out of a possible = 75.0%

A school that improves its High School Assessment Test Passage Rate and the 4-year, 5-year, 6-year, 7-year, and 8-year Graduation Rates by 10% or more in both the current and prior two year comparison periods can be rated no lower than Meets Expectations.

Because the school earned enough points for a higher rating than Does Not Meet Standards, this calculation does not apply.

[Click here](#) to see the Secure Data Center - Status of Reports report

### Rating Scale:

|                         |               |
|-------------------------|---------------|
| Exceeds Standards       | 80.0 - 100.0% |
| Meets Standards         | 40.0 - 79.9%  |
| Does Not Meet Standards | 0.0 - 39.9%   |

75

RATING

Not Rated